

# GIUNTI

COUPLINGS



Piazzalunga

## ***Giunti a denti SERIE GDP***

*Curved tooth gear  
couplings GDP SERIES*



---

## ***Giunti a denti SERIE GD***

*Curved tooth gear  
couplings GD SERIES*



# GIUNTI COUPLINGS

---

## ***Giunti a denti SERIE GDS***

*Curved tooth gear  
couplings GDS SERIES*



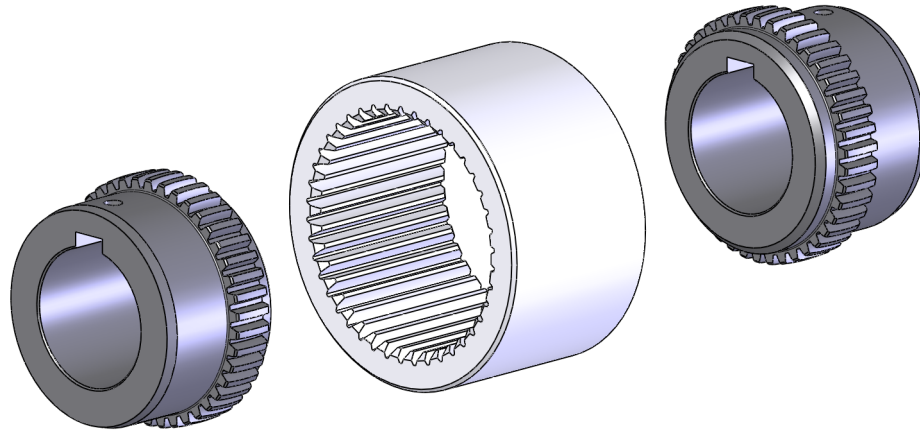
---

## ***Giunti a stella SERIE GSTR***

*Row couplings GSTR SERIES*



# GIUNTI COUPLINGS



**serie GDP**

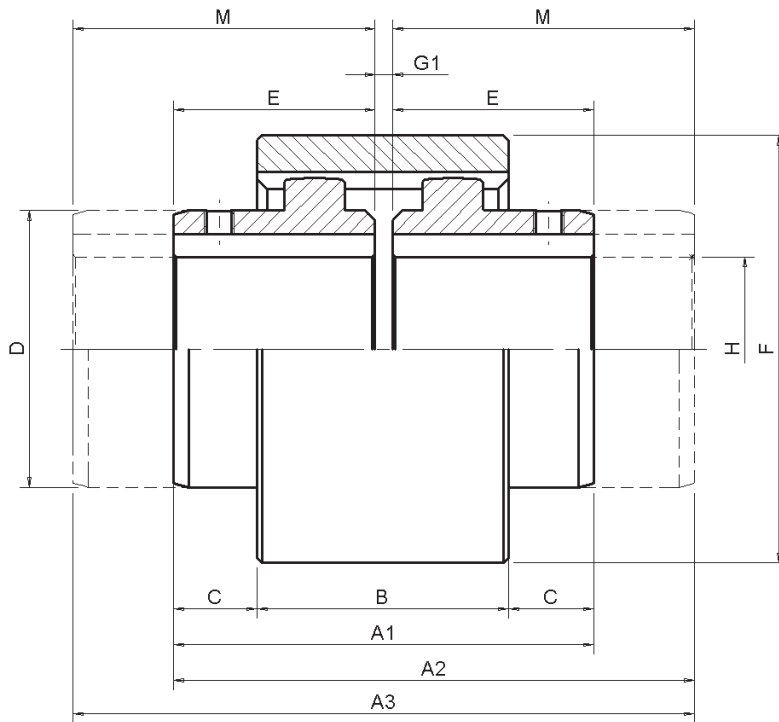
## DATI TECNICI – TECHNICAL DATA

GRAND SIZE	N [kW] / n [rpm]		T <sub>k</sub> [Nm]		VEL MAX MAX SPEED [rpm]	MASSA <sup>(1)</sup> WEIGHT [kg]	INERZIA <sup>(1)</sup> INERTIA [kgcm <sup>2</sup> ]	DISALLINEAMENTO MISALIGNMENT		
	Std	Max	T <sub>kN</sub>	T <sub>k max</sub>				ANG <sup>(2)</sup> [°]	RAD [mm]	ASS [mm]
040	0,0011	0,0023	11,5	23,0	14000	0,22	0,27	± 2°	0,7	± 1
050	0,0019	0,0037	18,5	36,5	12000	0,38	0,64	± 2°	0,8	± 1
060	0,0023	0,0047	23,0	46,0	10000	0,49	0,92	± 2°	0,8	± 1
070	0,0053	0,0106	51,5	103,5	8000	1,16	3,45	± 2°	1,0	± 1
075	0,0071	0,0142	69,0	138,0	7100	1,42	5,03	± 2°	1,0	± 1
085	0,0090	0,0181	88,0	176,0	6300	1,99	9,59	± 2°	0,9	± 1
095	0,0113	0,0226	110,0	220,0	6000	2,39	13,06	± 2°	0,9	± 1
100	0,0158	0,0317	154,0	308,0	5600	3,20	18,15	± 2°	0,9	± 1
120	0,0290	0,0580	285,0	570,0	4800	5,61	49,44	± 2°	1,2	± 1
140	0,0432	0,0865	420,0	840,0	4000	8,63	106,34	± 2°	1,3	± 1

- GIUNTO CON MOZZI STD, FORO MAX SENZA CAVA – COUPLING WITH STD HUBS, MAX BORE WITHOUT KEYWAY
- PER MOZZO – EACH HUB

DATI NON IMPEGNATIVI – NOT BINDING DATA

# GIUNTI COUPLINGS



**serie GDP**

**DIMENSIONI [mm] – DIMENSIONS [mm]**

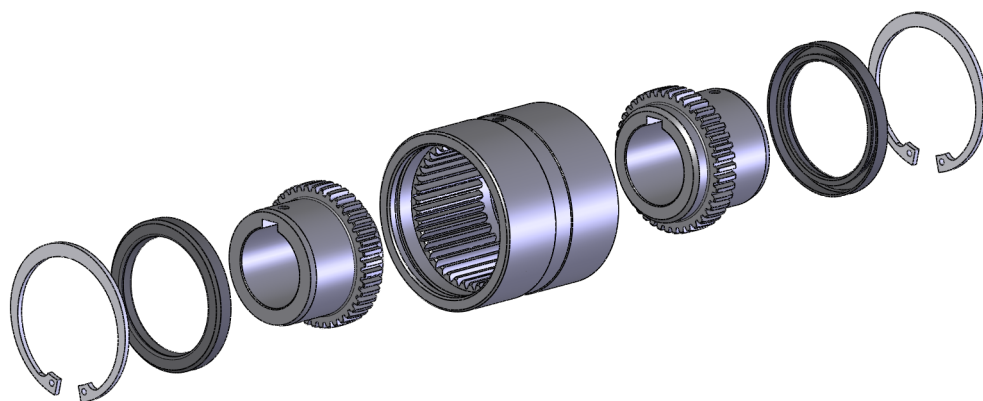
GRAND SIZE	A <sub>1</sub> <sup>(1)</sup>	A <sub>2</sub> <sup>(1)</sup>	A <sub>3</sub> <sup>(1)</sup>	B	C	D	E	F	G <sub>1</sub> <sup>(1)</sup>	H <sup>(2)</sup>	M
040	51	57,5	64	38	6,5	25	23,5	40	4	14	30
050	55	69,5	84	38	8,5	32	25,5	48	4	19	40
060	57	80,5	104	42	7,5	36	26,5	52	4	24	50
070	86	105	124	48	19	45	41	68	4	28	60
075	84	104	124	48	18	50	40	75	4	32	60
085	84	124	164	50	17	60	40	85	4	38	80
095	88	156	224	50	19	63	42	95	4	42	110
100	104	164	224	50	27	68	50	100	4	48	110
120	124	174	224	65	29,5	82	60	120	4	55	110
140	144	214	284	72	36	95	70	140	4	65	140

• QUOTE DI MONTAGGIO – ASSEMBLY DIMENSIONS

• FORO MAX CONSENTITO - A RICHIESTA : Fori Finiti ISO H7 - Cave UNI 6604 – MAX ALLOWED BORE - ON REQUEST : Machined Bores ISO H7 - keyways UNI 6604

**DATI NON IMPEGNATIVI – NOT BINDING DATA**

# GIUNTI COUPLINGS



**serie GD**

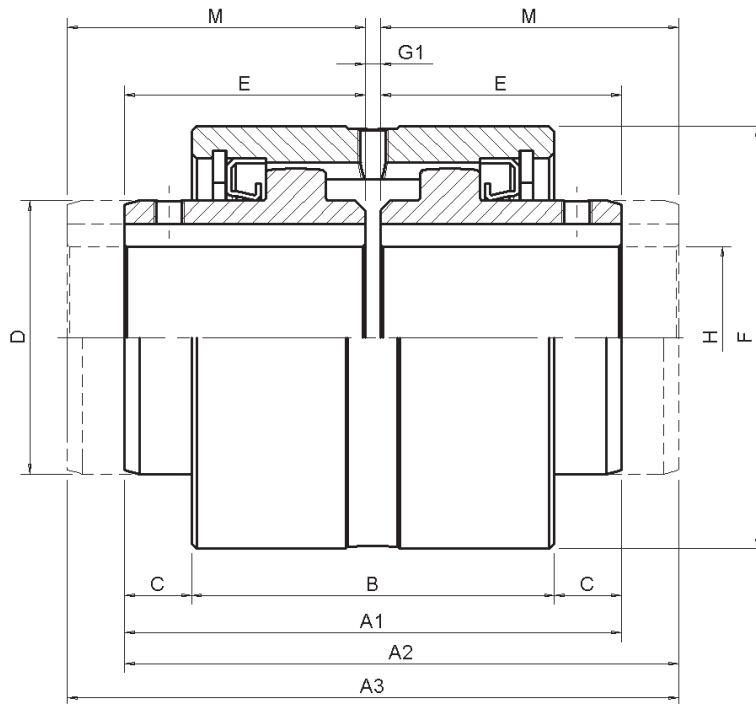
## DATI TECNICI – TECHNICAL DATA

GRAND SIZE	N [kW] / n [rpm]		T <sub>K</sub> [Nm]		VEL MAX MAX SPEED [rpm]	MASSA <sup>(1)</sup> WEIGHT [kg]	INERZIA <sup>(1)</sup> INERTIA [kgcm <sup>2</sup> ]	DISALLINEAMENTO MISALIGNMENT		
	Std	Max	T <sub>KN</sub>	T <sub>K max</sub>				ANG <sup>(2)</sup> [°]	RAD [mm]	ASS [mm]
070	0,061	0,157	600	1524	6000	1,6	8,68	0,25°	0,20	± 1
085	0,103	0,259	1000	2520	5000	3,1	25,10	0,25°	0,26	± 1
100	0,128	0,322	1250	3125	4200	4,6	44,82	0,25°	0,32	± 1
120	0,257	0,639	2500	6200	3500	8,7	132,60	0,25°	0,37	± 1
140	0,412	0,985	4000	9260	3000	13,5	278,20	0,25°	0,40	± 1
175	0,773	1,855	7500	18000	2600	23,0	558,60	0,25°	0,48	± 1
200	1,236	2,937	12000	28500	1400	38,1	1044,50	0,25°	0,65	± 1
250	2,431	5,795	23600	56250	950	83,0	3650,00	0,25°	0,70	± 1
300	4,121	9,273	40000	90000	700	159,5	9982,00	0,25°	0,80	± 1

- GIUNTO CON MOZZI STD, FORO MAX SENZA CAVA – COUPLING WITH STD HUBS, MAX BORE WITHOUT KEYWAY
- PER MOZZO – EACH HUB

DATI NON IMPEGNATIVI – NOT BINDING DATA

# GIUNTI COUPLINGS



**serie GD**

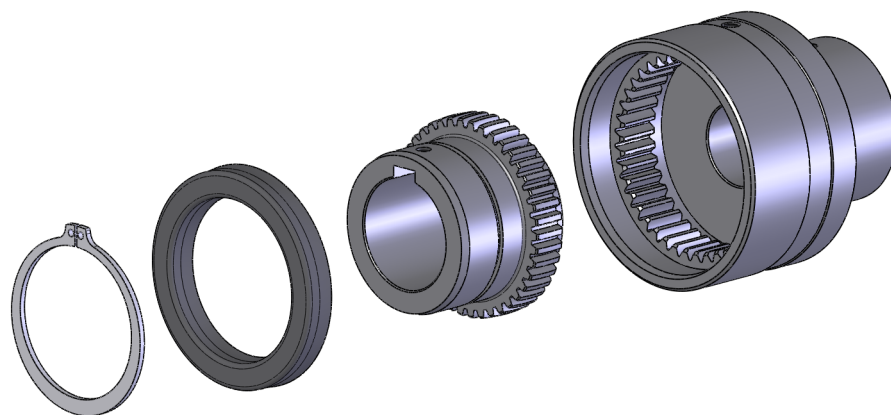
**DIMENSIONI [mm] – DIMENSIONS [mm]**

GRAND SIZE	A <sub>1</sub> <sup>(1)</sup>	A <sub>2</sub> <sup>(1)</sup>	A <sub>3</sub> <sup>(1)</sup>	B	C	D	E	F	G <sub>1</sub> <sup>(1)</sup>	H <sup>(2)</sup>	M
070	85	104	123	61	12	42	41	68	3	28	60
085	100	131,5	163	73	13,5	55	48,5	85	3	38	80
100	115	139	163	82	16,5	64	56	95	3	48	80
120	140	172	204	97	21,5	80	68	120	4	60	100
140	153	198	243	108	22,5	100	74,5	140	4	70	119,5
175	170	227,5	285	125	22,5	125	82,5	175	5	90	140
200	216	285,5	355	148	34	150	105	198	6	110	174,5
250	288	355,5	423	214	39	190	140	245	8	140	207,5
300	370	433	498	240	64	240	180	300	10	175	245

- QUOTE DI MONTAGGIO – ASSEMBLY DIMENSIONS
- FORO MAX CONSENTITO - A RICHIESTA : Fori Finiti ISO H7 - Cave UNI 6604 – MAX ALLOWED BORE - ON REQUEST : Machined Bores ISO H7 - keyways UNI 6604

**DATI NON IMPEGNATIVI – NOT BINDING DATA**

# GIUNTI COUPLINGS



**serie GDS**

## DATI TECNICI – TECHNICAL DATA

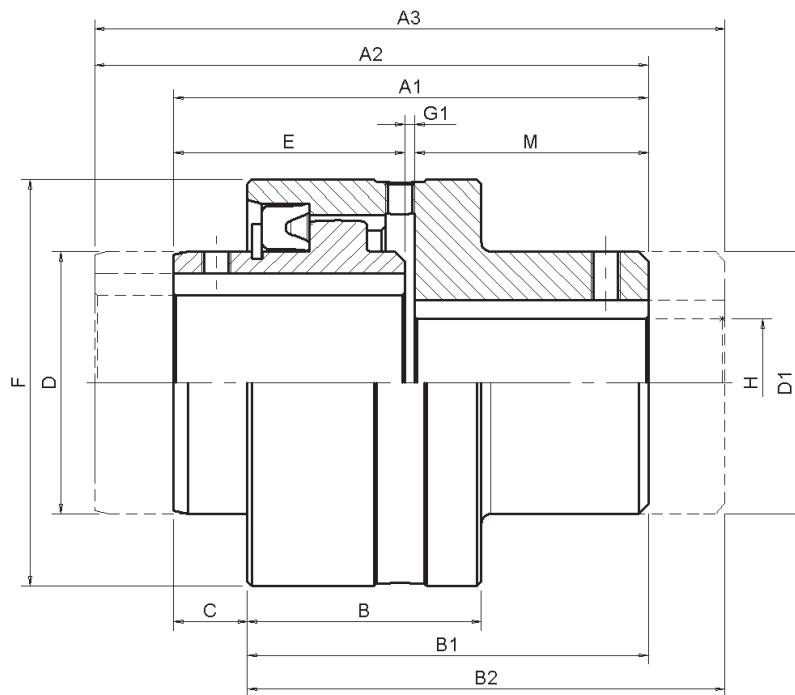
GRAND SIZE	N [kW] / n [rpm]		T <sub>K</sub> [Nm]		VEL MAX MAX SPEED [rpm]	MASSA <sup>(1)</sup> WEIGHT [kg]	INERZIA <sup>(1)</sup> INERTIA [kgcm <sup>2</sup> ]	DISALLINEAMENTO MISALIGNMENT		
	Std	Max	T <sub>KN</sub>	T <sub>K max</sub>				ANG <sup>(2)</sup> [°]	RAD [mm]	ASS [mm]
070	0,061	0,157	600	1524	6000	1,35	7,31	0,25°	0,20	± 1
085	0,103	0,259	1000	2520	5000	2,43	19,15	0,25°	0,26	± 1
100	0,128	0,322	1250	3125	4200	3,64	34,13	0,25°	0,32	± 1
120	0,257	0,639	2500	6200	3500	6,07	96,56	0,25°	0,37	± 1
140	0,412	0,985	4000	9260	3000	10,00	207,32	0,25°	0,40	± 1
175	0,773	1,855	7500	18000	2600	19,18	492,60	0,25°	0,48	± 1
200	1,236	2,937	12000	28500	1400	28,00	1064,00	0,25°	0,65	± 1

- GIUNTO CON MOZZI STD, FORO MAX SENZA CAVA – COUPLING WITH STD HUBS, MAX BORE WITHOUT KEYWAY
- PER MOZZO – EACH HUB

DATI NON IMPEGNATIVI – NOT BINDING DATA



# GIUNTI COUPLINGS



serie GDS

## DIMENSIONI – DIMENSIONS

GRAND SIZE	A <sub>1</sub> <sup>(1)</sup>	A <sub>2</sub> <sup>(1)</sup>	A <sub>3</sub> <sup>(1)</sup>	B	B <sub>1</sub>	B <sub>2</sub>	C	D	D <sub>1</sub>	E	F	G <sub>1</sub> <sup>(1)</sup>	H <sup>(2)</sup>	M
070	85	104	123	43	72	91	13	42	40	41	70	3	28	41
085	100	131,5	163	49	84	115,5	16	55	55	48,5	85	3	38	48,5
100	115	139	163	54,5	96,5	120,5	18,5	64	64	56	95	3	48	56
120	132	164	204	60	105	145	27	80	80	68	120	4	60	60
140	140	185	243	63	109	167	31	100	100	74,5	140	4	75	61,5
175	153	210,5	283	76	127	199,5	26	125	125	82,5	175	5	90	65,5
200	201	273	342,5	92	163	235	38	150	150	105	198	6	110	90

- QUOTE DI MONTAGGIO – ASSEMBLY DIMENSIONS
- FORO MAX CONSENTITO - A RICHIESTA : Fori Finiti ISO H7 - Cave UNI 6604 – MAX ALLOWED BORE - ON REQUEST : Machined Bores ISO H7 - keyways UNI 6604

DATI NON IMPEGNATIVI – NOT BINDING DATA

Note

---

---

---

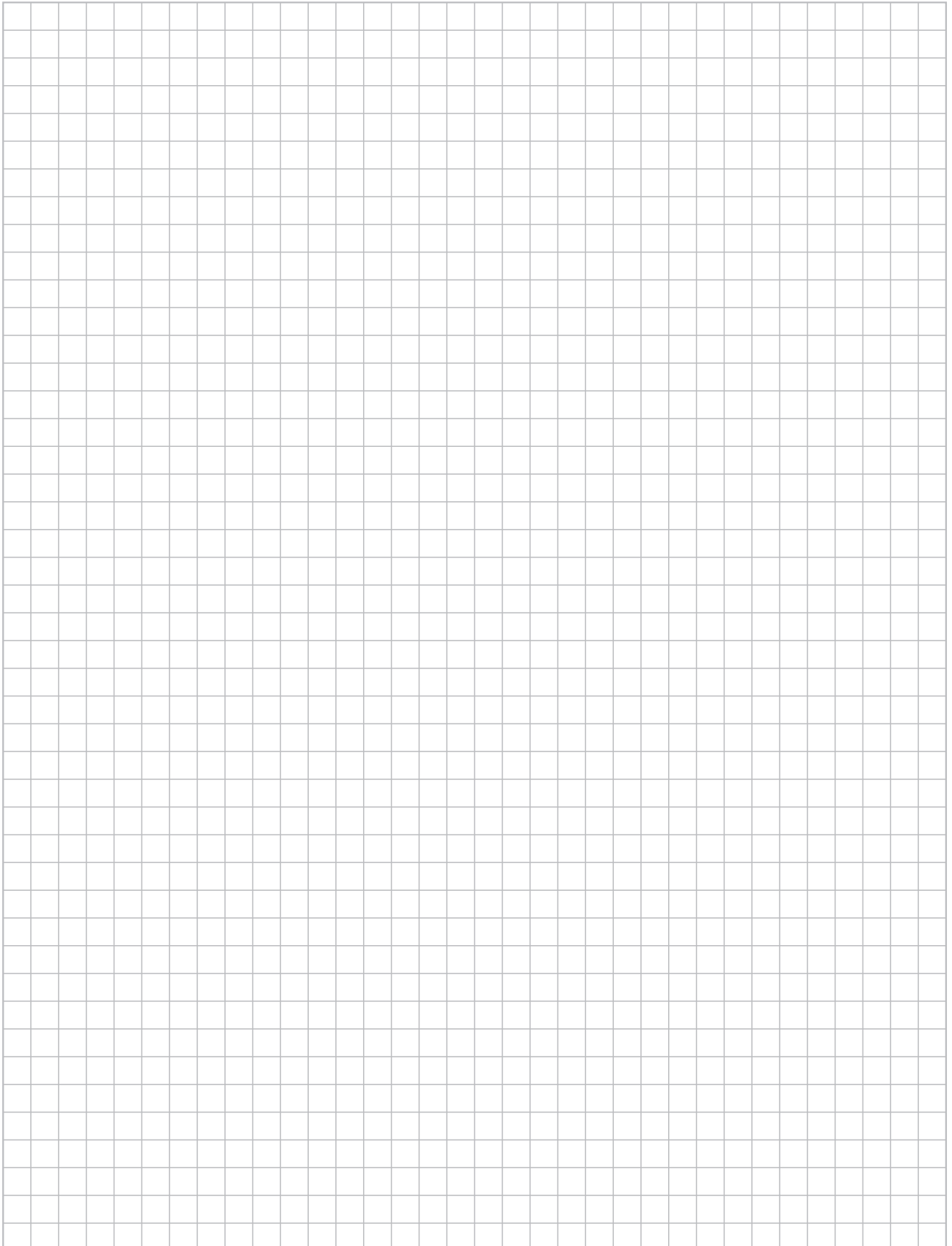
---

---

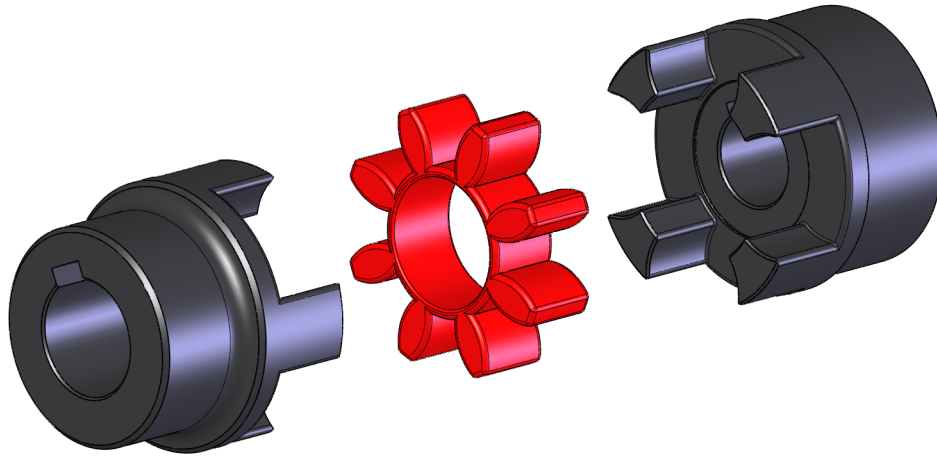
---

---

---

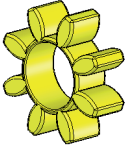



# GIUNTI COUPLINGS



**serie GSTR**

## TIPOLOGIA STELLA – SPIDER TYPES

	DUREZZA HARDNESS	TEMPERATURA ESERCIZIO TEMPERATURE RANGE [°C]		GRANDEZZA SIZE	CARATTERISTICHE FEATURES
		CONTINUA CONTINUOUS	MAX		
	92 Shore-A	- 40 / + 90	- 50 / + 120	030 / 200	<ul style="list-style-type: none"> <li>• Macchine standard, idraulica. Buona elasticità</li> <li>• <i>Standard machineries, hydraulics. Average elasticity</i></li> </ul>
	98 Shore-A	- 30 / + 90	- 40 / + 120	030 / 200	<ul style="list-style-type: none"> <li>• Trasmissione ottimale della coppia</li> <li>• Ottimo smorzamento delle vibrazioni</li> <li>• <i>Good torque trasmission</i></li> <li>• <i>Good damping properties</i></li> </ul>

## COEFFICIENTI DI SERVIZIO – SERVICE FACTORS

TEMPERATURA - TEMPERATURE					FREQUENZA AVVIO – STARTING FREQ				LIVELLO URTO – SHOCKS LEVEL				
TEMP	-30 °C +30 °C	+40 °C	+60 °C	+80 °C	Avvio/h Start/h	100	200	400	800	URTO SHOCK	LEGGERO LIGHT	MEDIO AVERAGE	ALTO HEAVY
S <sub>i</sub>	1,0	1,2	1,4	1,8	S <sub>z</sub>	1,0	1,2	1,4	1,6	S <sub>A</sub> / S <sub>L</sub>	1,5	1,8	2,5

# GIUNTI COUPLINGS

## DATI TECNICI STELLA – SPIDER TECHNICAL DATA

STELLA 92 Shore-A (GIALLA) – SPIDER 92 Shore-A (YELLOW)													
GRAND SIZE	VEL MAX MAX SPEED [rpm]	ANGOLO TORSIONE TWISTING ANGLE		COPPIA TORQUE [Nm]			RIGIDITA' TORSIONALE TORSION STIFFNESS [Nm/rad x 10 <sup>3</sup> ]				DISALLINEAMENTO MISALIGNMENT		
		T <sub>KN</sub>	T <sub>K max</sub>	T <sub>KN</sub>	T <sub>K max</sub>	T <sub>KW</sub>	1,00 T <sub>KN</sub>	0,75 T <sub>KN</sub>	0,50 T <sub>KN</sub>	0,25 T <sub>KN</sub>	ANG	RAD	ASS
030	25000	6,4°	10°	7,5	15	2	0,38	0,31	0,24	0,14	1,18°	0,3	0,9
040	19000			10	20	2,6	1,28	1,05	0,80	0,47		0,4	1,0
055	14000			35	70	9,1	4,86	3,98	3,01	1,79		0,8	1,0
065	11800			95	190	49	10,90	8,94	6,76	4,01		1,0	1,2
080	9500			190	380	69	21,05	17,26	13,05	7,74		1,0	1,4
095	8000			265	530	81	23,74	19,47	1,72	8,73		1,0	1,6
105	7100			310	620	107	36,70	30,09	22,75	13,49		1,4	1,7
120	6300			410	820	163	50,72	41,59	31,45	18,64		1,4	1,8
135	5600			625	1250	333	97,13	79,65	60,22	35,70		1,4	2,0
160	4750			1280	2560	624	113,32	92,92	70,26	41,65		1,8	2,5
200	3750	2400	4800	858	190,09	155,87	117,86	69,86	1,8	2,8			

STELLA 98 Shore-A (ROSSA) – SPIDER 98 Shore-A (RED)													
GRAND SIZE	VEL MAX MAX SPEED [rpm]	ANGOLO TORSIONE TWISTING ANGLE		COPPIA TORQUE [Nm]			RIGIDITA' TORSIONALE TORSION STIFFNESS [Nm/rad 10 <sup>3</sup> ] (T <sub>KN</sub> )				DISALLINEAMENTO MISALIGNMENT		
		T <sub>KN</sub>	T <sub>K max</sub>	T <sub>KN</sub>	T <sub>K max</sub>	T <sub>KW</sub>	1,00 T <sub>KN</sub>	0,75 T <sub>KN</sub>	0,50 T <sub>KN</sub>	0,25 T <sub>KN</sub>	ANG	RAD	ASS
030	25000	6,4°	10°	12,5	25	3,3	0,56	0,46	0,35	0,21	1,18°	0,3	0,9
040	19000			17	34	4,4	2,92	2,39	1,81	1,07		0,4	1,0
055	14000			60	120	16	9,93	8,14	6,16	3,65		0,8	1,0
065	11800			160	320	42	26,77	21,95	16,60	9,84		1,0	1,2
080	9500			325	650	85	48,57	39,83	30,11	17,85		1,0	1,4
095	8000			450	900	117	54,50	44,69	33,79	20,03		1,0	1,6
105	7100			525	1050	137	65,29	53,54	40,48	24,00		1,4	1,7
120	6300			685	1370	178	94,97	77,88	58,88	34,90		1,4	1,8
135	5600			940	1880	244	129,51	106,20	80,30	47,60		1,4	2,0
160	4750			1920	3840	499	197,50	161,95	122,45	72,58		1,8	2,5
200	3750	3600	7200	936	312,20	256,00	193,56	114,73	1,8	2,8			

DATI NON IMPEGNATIVI – NOT BINDING DATA

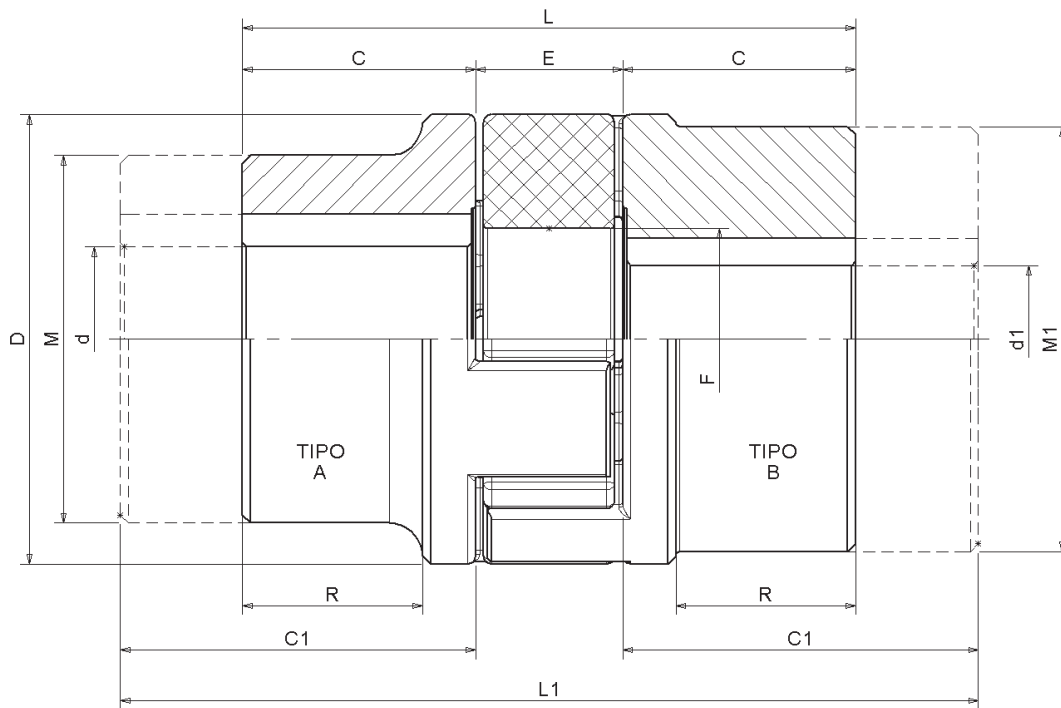
# GIUNTI COUPLINGS

## ABBINAMENTO GIUNTI / MOTORI IEC (STELLA 92 Shore A) – COUPLINGS / IEC MOTORS ARRANGEMENT (92 Shore A SPIDER)

GIUNTO COUPLING	MOTORE MOTOR 50 Hz AC		2 POLI 2 POLES [3000 rpm]		4 POLI 4 POLES [1500 rpm]		6 POLI 6 POLES [1000 rpm]		8 POLI 8 POLES [750 rpm]		
	GRAND SIZE	ALBERO SHAFT	N [kW]	T [Nm]	N [kW]	T [Nm]	N [kW]	T [Nm]	N [kW]	T [Nm]	
030	63	11x23	0,18	0,62	0,12	0,83	0,06	0,66			
		11x23	0,25	0,86	0,18	1,24	0,09	0,99			
	71	14x30	0,37	1,28	0,25	1,72	0,18	1,98	0,09	1,2	
		14x30	0,55	1,9	0,37	2,55	0,25	2,75	0,12	1,6	
040	80	19x40	0,75	2,59	0,55	3,79	0,37	4,07	0,18	2,4	
		19x40	1,1	3,79	0,75	5,17	0,55	6,04	0,25	3,33	
	90S	24x50	1,5	5,17	1,1	7,59	0,75	8,24	0,37	4,93	
	90L	24x50	2,2	7,59							
055	100L	28x60	3	10	2,2	15	1,5	16	0,75	10	
		28x60			3	21			1,1	15	
	112M	28x60	4	14	4	28	2,2	24	1,5	20	
065	132S	38x80	5,5	19	5,5	38	3	33	2,2	29	
		38x80	7,5	26							
	132M	38x80			7,5	52	4	44	3	40	
		38x80					5,5	60			
080	160M	42x110	11	38	11	76	7,5	82	4	53	
		42x110	15	52					5,5	73	
	160L	42x110	18,5	64	15	103	11	121	7,5	100	
095	180L	48x110			22	152	15	165	11	147	
		48x110	22	76	18,5	128					
	200L	55x110	30	103	30	207	18,5	203	15	200	
		55x110	37	128			22	242			
	225M	55x110	45	155							
105	225S	60x140			37	255			18,5	247	
		60x140	55	190							
120	225M	60x140			45	310	30	330	22	293	
		65x140			55	379					
	280M	65x140	90	310							
	280S	65x140	75	259							
	315S	65x140	110	379							
135	250M	65x140					37	407	30	400	
		75x140			75	517					
	315M	65x140	132	455							
	315L	65x140	160	552							
160	280M	75x140			90	621	55	604	45	600	
		75x140					45	495	37	493	
	315S	80x170			110	759	75	824	55	733	
	315M	80x170			132	910	90	989			
	315L	65x140	200	690							
	315	65x140	250	862							
200	315M	80x170	315	1086							
		80x170			160	1103	110	1209	90	1200	
	315L	80x170			200	1379	132	1451	132	1760	
		80x170					160	1758			
	315	85x170			250	1724	200	2198	160	2133	
		85x170			315	2172	250	2747	200	2667	
	355	75x140	355	1224							
			400	1379							
		75x140	500	1724							
			355		355	2448	315	3462	250	3333	
			95x170		400	2759	400	4396	315	4200	
400	80x170	560	1931								
		630	2172								
	80x170	710	2448								

- ABBINAMENTO VALIDO PER AMBIENTE CON TEMPERATURE ENTRO + 30° C
- ARRANGEMENT VALID FOR AMBIENT TEMPERATURE UP TO + 30° C
- COPPIA DEL GIUNTO  $T_{Kmax}$  CALCOLATA CON COEFFICIENTE DI SICUREZZA = 2.
- COUPLING TORQUE  $T_{Kmax}$  ARRANGED FOR SAFETY FACTOR = 2.

# GIUNTI COUPLINGS



**serie GSTR**

## DIMENSIONI – DIMENSIONS

GRAND SIZE	d <sup>(1)</sup>	d <sub>1</sub> <sup>(1)</sup>	C	C <sub>1</sub>	D	E <sup>(2)</sup>	F	L <sup>(2)</sup>	L <sub>1</sub> <sup>(2)</sup>	M	M <sub>1</sub>	R
<b>030</b>	<sup>(3)</sup>	16	11	18,5	30	13	10	35	50	<sup>(3)</sup>	30	<sup>(3)</sup>
<b>040</b>	19	24	25	37	40	16	18	66	90	30	40	19
<b>055</b>	24	32	30	50	55	18	27	78	118	40	53	23,5
<b>065</b>	28	38	35	60	65	20	30	90	140	48	63	27,5
<b>080</b>	38	48	45	70	80	24	38	114	164	66	78	36,5
<b>095</b>	42	55	50	75	95	26	46	126	176	75	93	40
<b>105</b>	48	60	56	80	105	28	51	140	188	85	103	45
<b>120</b>	55	70	65	90	120	30	60	160	210	98	118	52
<b>135</b>	65	75	75	100	135	35	68	185	235	115	133	61
<b>160</b>	75	90	85	110	160	40	80	210	260	135	158	69
<b>200</b>	90	110	100	125	200	45	100	245	295	160	180	81

- FORO MAX CONSENTITO – MAX ALLOWED BORE
- QUOTE DI MONTAGGIO – ASSEMBLY DIMENSIONS
- DISPONIBILE SOLO MOZZO TIPO "B" – ONLY "B" VERSION AVAILABLE

A RICHIESTA Fori Finiti ISO H7; Cave UNI 6604 – Machined Bores ISO H7; keyways UNI 6604 ON DEMAND

DATI NON IMPEGNATIVI – NOT BINDING DATA

Note

---

---

---

---

---

---

---

---



**EDT-S100**  
Pulegge



**ES-RV**  
Pulegge



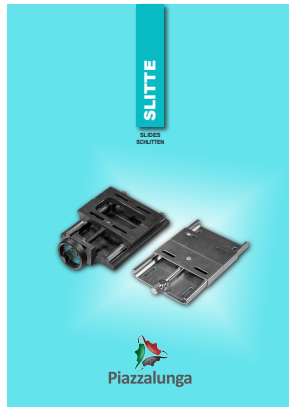
**MINI**  
Pulegge



**BES**  
Variatori



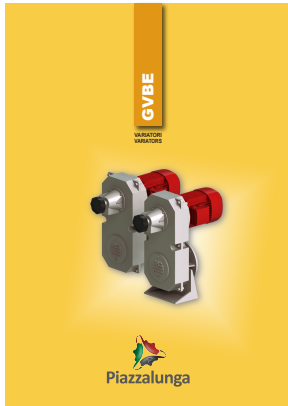
**SL-SMP-SX-SS-SC-SA**  
Slitte



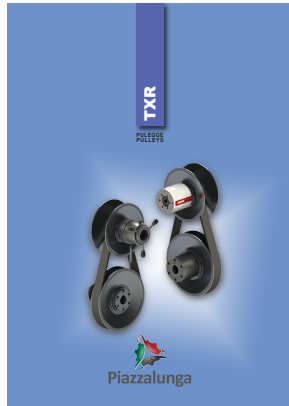
**GDP-GD-GDS-GSTR**  
Giunti



**GVBE**  
Variatori



**TXR**  
Pulegge



**Limitatori**



# Piazzalunga

PIAZZALUNGA - via Pozze, 7 - 24010 Bracca Bg Italia - tel. +39 0345 97121 - fax +39 0345 97970  
www.piazzalunga.com - info@piazzalunga.com